



**Centurion**  
**UNIVERSITY**  
*Shaping Lives...  
Empowering Communities...*

# Environment Sustainability Policy Centurion University of Technology and Management



# Centurion University of Technology and Management

## Environment Sustainability Policy

### **Vision:**

A globally accredited human resource center of excellence catalyzing “sustainable livelihoods” in the “less developed markets across the globe”.

### **Foreword from Vice Chancellor:**

Centurion University in aligning itself with the United Nations Sustainable Development Goals (SDGs) has specifically focused on 7 SDGs and embedded it in everything from its strategy, governance, institutional management and outcomes. The promoters, faculty and staff are fully committed to the University’s tag line: Shaping Lives. Empowering Communities. This theme is underpinned by a value system of Inclusivity, Integrity, Equity, Respect and Sustainability in everything we do.

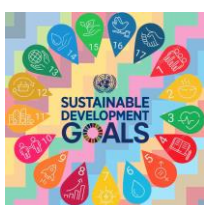
The University continually strives to create social impact by being a best in class human resource development hub that builds employable, enterprising and society centric youth through industry relevant education, skill development, new ventures, production, and technology development. Since its inception in 2005 and subsequent recognition as a University in 2010, Centurion has created a unique environment that ensures a tailored learning and employability path for youth in some of the poorest and underserved geographies in Odisha and Andhra Pradesh.

Students with active support from teachers are required to reach out to local communities and put into practice the learning, knowledge and skills acquired in the University campuses to identify and address day to day problems of communities within which it exists. This program additionally helps students to develop a sense of responsibility for community, engagement through communication, strategic planning, innovative approach for problem solving, team spirit, etc, thus building confidence to be a productive citizen of the World.

All staff and students engaged in University activities have a duty to uphold the Policy.

### **Stakeholder engagement:**

Environmental sustainability does not just fall to one department at the Centurion University. Although the Students, teachers and local communities leads on much of this work, there are initiatives, projects, research and commitments right across our Campuses, Departments and Facilities.



Every aspect of our teaching, research and operational activities are dependent on energy use. We know that the use of electricity, gas, steam, and fuel has an effect on the local and global environment, which is why we are committed to reducing our energy consumption across all sites. Since the inception the University has been continuously working to implement actions to reduce our energy consumption and carbon emissions.

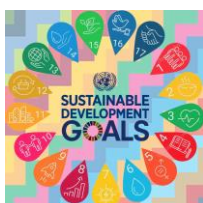
## **Energy**

The University is committed to being as efficient as possible in its use of energy and resources, in order to minimise both its impact on the environment and its expenditure on energy.

The Energy Policy sets out the University's commitment to reducing its energy and carbon emissions.

The University aims to:

- Monitor and measure energy use in all parts of the University, quantifying consumption and identifying significant and abnormal energy use;
- Set targets for reducing energy consumption and review annually as part of the carbon management plan;
- Reduce energy consumption through a targeted plan of work designed to minimise usage and improve efficiency;
- Reduce the University's carbon footprint by 43% by 2020;
- Report on energy use, costs and associated emissions to Senior Management;
- Communicate to all staff and students the heating and cooling policy and how to reduce energy consumption and support them to do this through the Green Impact programme;
- Maintain awareness of emerging low carbon/alternative technologies and explore potential for implementation;
- Collaborate with research and commercial innovation organizations in relation to energy efficiency projects;
- Consider the energy implications of all major campus developments;
- Review the Energy Policy annually measuring progress against the targets and revise targets accordingly;



## Recycling and Waste:

Centurion University is committed to reducing its environmental impacts through effective waste management and aims to divert at least 90% of waste from landfill

The purpose of this policy is to enable the university to honour its commitment to manage waste responsibly.

Definitions:

**Waste:** Waste includes any substance or object which the holder discards or intends or is required to discard and any substance which constitutes a scrap material, an effluent or other unwanted surplus arising from the application of any process or any substance or article which requires to be disposed of which has been broken, worn out, contaminated or otherwise spoiled as per the Environmental Protection Act 1990 and amendments.

**General waste:** A form of controlled waste, comprising of all waste from the university the exception of fibre, co-mingled recyclables, food waste and hazardous waste.

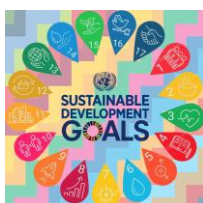
**Fibre waste:** Card and paper

**Co-mingled waste:** Cans, Glass and Plastic. Note the absence of food as this will contaminate recyclables

**Hazardous Waste:** It includes waste that could, in certain circumstances, be harmful to human health or the environment in the short or long term due to its physical, chemical or biological properties. Batteries, fluorescent tubes, photographic chemicals, paint, waste oils, solvents, acids, alkaline solutions, pesticides and electrical equipment are all hazardous wastes.

To manage waste responsibly, the university will:

- Remain compliant with all relevant waste legislation;
- Aim to reduce the amount of waste generated and the associated environmental impacts by applying the principles of the waste management hierarchy;
- Provide facilities to ensure the safe handling, effective segregation and secure storage of waste on all campuses, with these aimed at maximising reuse and recycling opportunities;
- Set specific objectives and targets in relation to minimizing waste, improving recycling rates and reducing disposal to landfill;
- Complete regular waste audits in order to drive continual improvement;
- Provide appropriate training and induction for staff, students and visitors around waste practices and site specific requirements



All staff, students, contractors and visitors have a personal responsibility to ensure the waste they create is dealt with in accordance with this policy.

Chief consideration must be given to applying the waste management hierarchy to all activities across the university.

- Reduce: Only order/purchase/use the amount of materials required
- Reuse: Retain materials which can be reused onsite or by others
- Recycle: Segregate to maximise value of material for recycling
- Recover: Energy from waste will be recovered where facilities allow
- Dispose: Last resort

The Facilities Management Team will ensure appropriate procedures and waste management processes are in place as applicable for the principal waste streams (e.g. General waste, fibre waste, co-mingled waste and hazardous waste from estate activities).

Waste should be prevented or minimised wherever possible and must be stored, carried, processed or disposed of in accordance with the principles of duty of care.

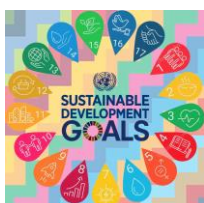
Waste must be stored in compliant and suitable containers and locations pending their disposal.

Waste containers must be securely sealed to prevent accidental spillage or leakage.

Segregation of waste must occur on site to prevent contamination and mixing of materials to maximise the opportunity for recycling.

Waste is not to be stored in plant rooms, service risers or any other location not intended for waste collection.

Waste and recycling removed from the university must only be transported by persons or service providers that are authorised to do so.



## **Biodiversity:**

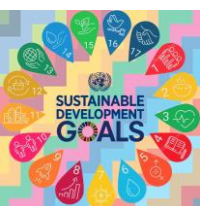
CUTM is committed to maintaining and wherever possible, enhancing, the quality of this environment, both for people who live and work in the University and for the wider community.

CUTM's vision is to create the most stimulating, challenging and rewarding university experience in a world-class learning community by sharing its unique fusion of education, research and practice and inspiring our students and staff to enrich the world. The University recognises that its operations have the potential to impact on biodiversity both directly and indirectly and that it has a responsibility to manage these impacts.

This Policy forms part of CUTM's contribution to achieving the UN Sustainable Development Goals.

- Seek to support projects and programmes that will conserve and, where possible, enhance habitats and biodiversity.
- Minimise the impact on habitats and biodiversity from grounds maintenance and landscaping work and prevent pollution by restricting the use of pesticides to a minimum.
- Seek to create, maintain and enhance habitats to encourage wildlife, where possible.
- Minimise the impact on biodiversity from development works and where possible seek a net increase in ecological value through project design and delivery.
- Ensure ecological surveys are completed prior to, and post completion of, building work and the results are documented.
- Work with stakeholders to improve habitat and biodiversity management practices.
- Actively seek opportunities to use the campuses as a Living Lab to link landscape management to education and research.

## **Training**



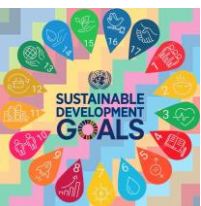
- Provide training for staff to ensure contractors are able to meet the requirements of the Biodiversity and Sustainability Policies.
- Ensure all contractors are provided with a copy of the CUTM Design Standards which reference the Biodiversity Policy.

### **Monitoring and reporting**

- Implement mechanisms for monitoring habitats and biodiversity on campus wherever possible.
- Actively encourage student and faculty-led monitoring projects at species level on campus.
- Review and update the Biodiversity actions with the Sustainability team at least once every year.

### **Communication, Education & Stakeholder Engagement**

- Raise awareness of staff and students about biodiversity on campuses, as well as the importance of biodiversity in general.
- Encourage learning & teaching and research activities to contribute to the delivery of this policy, in particular promote grounds as an educational resource for student projects.
- Encourage and support CUTM participation and contribution (research, development, good practices, and policy/procedures) at relevant national and international forums.
- Work in partnership with environmental groups, local communities, and local authorities to share research and knowledge and improve biodiversity management practices.



## **Good food(Sustainable food):**

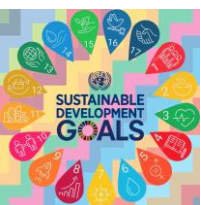
This policy sets out our approach to supporting food systems that are environmentally, socially and economically sustainable. It contributes to a range of University commitments, which says the University will ensure that its actions and activities deliver positive change, our Climate Strategy, which describes how the University will respond to climate crisis, and our pledge to work with partners to advance the Sustainable Development Goals.

Good Food is food and drink that is tasty, healthy, good for the environment and good for the people who make it. It is produced, purchased, transported, consumed and disposed of within food systems that are;

1. Environmentally sustainable by conserving or regenerating natural resources; avoiding pollution; mitigating emissions that cause climate change; protecting biodiversity; and upholding the highest standards of animal welfare.
2. Socially sustainable by fulfilling every person's right to adequate, healthy, safe, nutritious, good quality and appropriate food; providing people with opportunities to enjoy and learn about Good Food; and encouraging diverse food cultures.
3. Economically sustainable by delivering viable livelihoods for the people employed within food supply chains through living wages, workers' rights, fair trade and safe, decent working conditions; supporting thriving local economies; and ensuring Good Food is accessible and affordable for all.

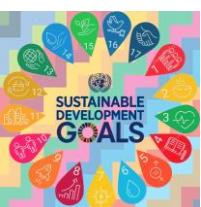
### Our commitments

- The University will adopt a whole-institution approach to Good Food by taking action within five key areas - Sourcing; Provision; Practice; Research, Learning & Teaching; and Leadership & Culture.
1. Sourcing - The University will source food and drink that is produced to environmentally, socially and economically sustainable standards by; Using traceable ingredients that minimize harm to the environment from local suppliers who meet the standards. Upholding our Fair Trade Policy by sourcing products from fair and ethical supply chains. Championing food that is produced and manufactured in our local community (from small and medium enterprises, third sector and supported businesses where possible). Using and highlighting seasonal ingredients on our menus.
  2. Provision - The University will provide good value, high quality, healthy and sustainable food that meets dietary needs and enhances the wellbeing of staff and students by;
    - a. Serving nutritionally balanced, freshly prepared food.
    - b. Offering better quality meat and attractive vegetarian and vegan options.
    - c. Raising awareness of healthy, sustainable choices (including meat-free options) and helping people make informed decisions by highlighting the provenance, seasonality and





- other sustainability and health aspects at the point of sale.
- d. Publishing nutritional information for all menu items.
  - e. Actively encouraging water consumption and discouraging bottled water purchases by providing accessible tap water points across the University.
3. Practice - The University will act responsibly towards the environment and people employed in our supply chains, and we will influence our suppliers to do the same, by;
    - a. Saving energy and water by efficiently managing our facilities and events. All new and replacement kitchen equipment will be electric (or induction where financially achievable).
    - b. Supporting the University's Zero Waste ambition by minimising food and packaging waste wherever possible. This will include removing single use disposables from University catering at every opportunity, discouraging the use of disposable items, exploring circular economy initiatives and ensuring no edible food is wasted.
    - c. Working with suppliers to reduce negative environmental impacts, including transport emissions, packaging and food waste.
    - d. Encouraging our suppliers to consider fair work practices and to subcontract or source according to best practice. We aim to leverage our relationships with local suppliers to promote fair work practices within the region.
    - e. Encouraging staff and students to conserve resources.
  4. Learning, Teaching & Research - The University will support initiatives that deepen understanding, collaboration and action on Good Food by;
    - a. Encouraging opportunities for staff and students to learn about sustainable food and gain practical skills.
    - b. Supporting staff and student-led activities that enhance the University's food culture (e.g. food growing on campus, resource efficiency initiatives and shared actions with the Students).
    - c. Supporting research and teaching on sustainable food systems and use research to improve University practice.
  5. Leadership & Culture - The University will seek to show leadership and adopt transparent and inclusive policies and practices that reflect the values of our staff and students by;
    - a. Ensuring opportunities for dialogue between researchers, students and professional services staff.
    - b. Publicly advertising the Good Food Policy, commitments and reporting on performance annually.
    - c. Demonstrating leadership and maintaining best practice by through external awards.
    - d. Partnering with others in our community to promote Good Food.
    - e. Procuring good food and related services in a sustainable and collaborative manner, demonstrating community benefits, gross value added, quality and value for money without risk to our reputation and to people who provide or consume food.



**Sustainability committee:**

Dr. Supriya Pattanayak, Vice Chancellor

Dr. Sibakripa Bose, Chief Mentor

Campus Administration Heads

CSR coordinators of campuses

Employee and Student Volunteers

