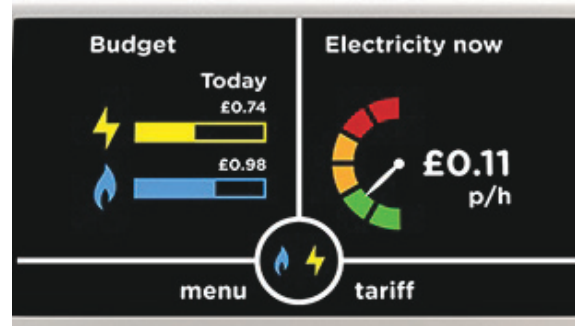


ISBN: 9798587652200

SMART METERING

By Rama Prasanna Dalai,

Assistant Professor, Centurion University of
Technology and Management Odisha

Introduction: A smart meter is an electronic device that enables intelligent control of electricity consumption, Bi directional data transmission, increased security of supply and higher efficiency and a variable tariff dependent on overall consumption and grid load. Basically smart meters facilitate a two-way communication channel between the meter and the central system.

A smart meter displays a digital meter reading by the use of a secure smart data network to automatically and wirelessly send the readings to the energy provider on a time to time basis. This helps the

consumer to receive accurate, not estimated bills.

Smart meter is something which measures the amount of gas and electricity we are using by means of gas and electricity meter, as well as its cost and display this on a handy in-home display by which consumers can be able to know the amount of energy used in time to time with its cost by virtue of which consumers can find out whether their electricity consumption are lying in the high, medium or low range.

Smart meter needs Radio waves to send the automatic reading to the Energy Company. Despite the health risk they actually spread less radiation than smartphones. Moreover, different scientific studies also reveal that smart meters provide no risks to health.

Smart meters that take data about the consumer's energy usage must be strongly protected by law. Consumers should have the full control over the decision which includes the frequency at which smart meter sends data to the energy provider in a timely manner, secondly whether data can be shared with other organizations and if our energy provider can use our meter readings for their sales and marketing purposes

The installation of Smart meters are quite safe because they follow different safety standards, and all such meters must comply the same regardless of any energy provider, secondly the installation work which must be carried out by trained in-